

**OUR
KEY DATA
2018**

- P 01 Our 3 businesses
- P 02 Our worldwide presence
- P 04 Our activities
- P 06 Extra-financial performance
 - 07 Environmental data
 - 10 Social data
 - 14 Societal data

OUR 3 BUSINESSES



95
million people supplied
with drinking water

63
million people connected
to wastewater systems

3,603
drinking water production
plants managed

2,667
wastewater treatment
plants managed



43
million people provided
with collection services
on behalf of municipalities

49
million metric tons
of treated waste

560,505
business clients

655
waste processing facilities
operated



46
million MWh
produced

42,053
thermal installations
managed

2,389
industrial sites
managed

615
heating and cooling
networks managed

OUR WORLDWIDE PRESENCE



€25,911

million revenue
worldwide

171,495

employees
worldwide

BREAKDOWN OF REVENUE AND WORKFORCE BY GEOGRAPHICAL AREA



NORTH
AMERICA

€2,394.9

million revenue

8,138

employees



LATIN
AMERICA

€892.5

million revenue

13,409

employees



EUROPE
(excluding France)

€10,086.5

million revenue

64,980

employees



FRANCE

€7,942.8

million revenue

50,849

employees



AFRICA
MIDDLE EAST

€1,457.2

million revenue

10,968

employees



ASIA
OCEANIA

€3,137.2

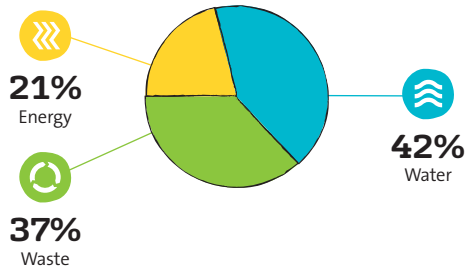
million revenue

23,151

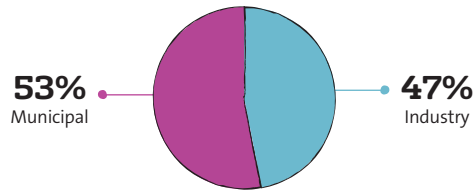
employees

OUR ACTIVITIES

BREAKDOWN OF REVENUE BY ACTIVITY



BREAKDOWN OF THE GROUP'S CUSTOMERS

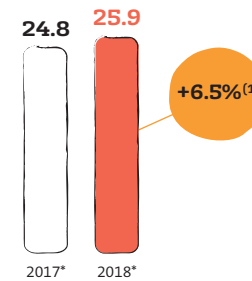


BREAKDOWN OF THE WORKFORCE BY ACTIVITY

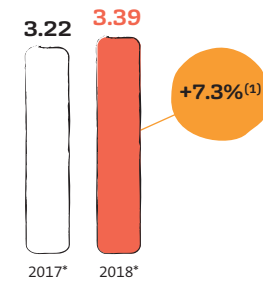


RESULTS, PERFORMANCES AND PROGRESS

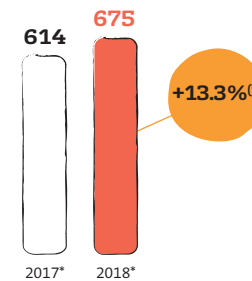
Revenue (€ billion)



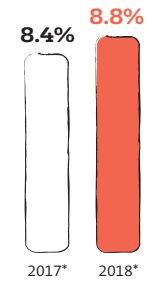
EBITDA⁽²⁾⁽³⁾ (€ billion)



Current net income attributable to owners of the Company⁽²⁾ (€ million)



Post-tax ROCE⁽²⁾⁽³⁾



(1) At a constant exchange rates.
 (2) See chapter 3 section 3.10.3 "Definitions" of the 2018 Registration Document.
 (3) Including IFRIC 12, impacts.
 * Reclassification of Lithuania in discontinued operations (IFRS 5) from 2016 and of Gabon in 2017 and 2018.

EXTRA-FINANCIAL PERFORMANCES



ENVIRONMENTAL DATA



DRINKING WATER MANAGEMENT



CIRCULAR ECONOMY: RECYCLING AND RECOVERY

Volume of water reused from collected and treated wastewater
(in million m³) - (water and waste activities)



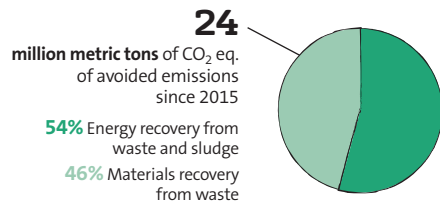
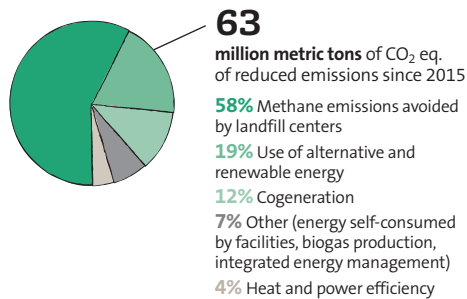
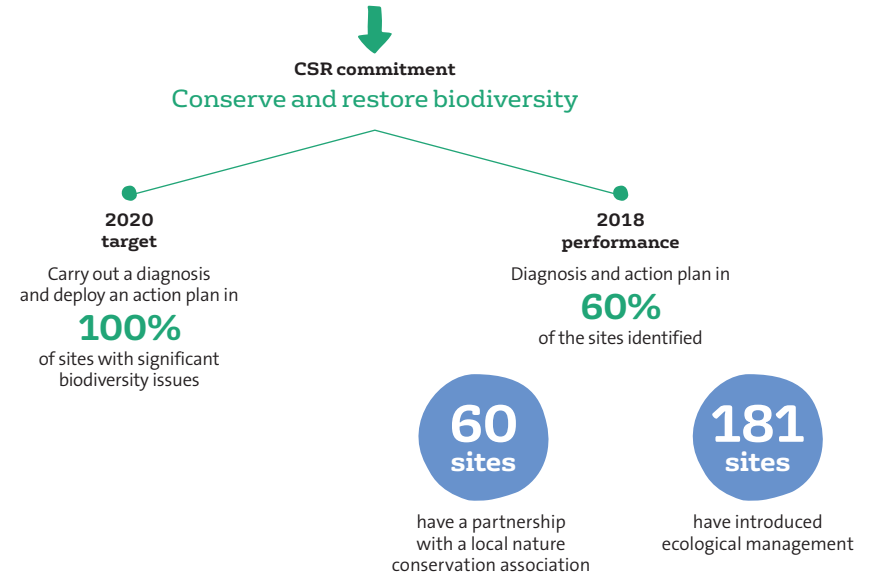
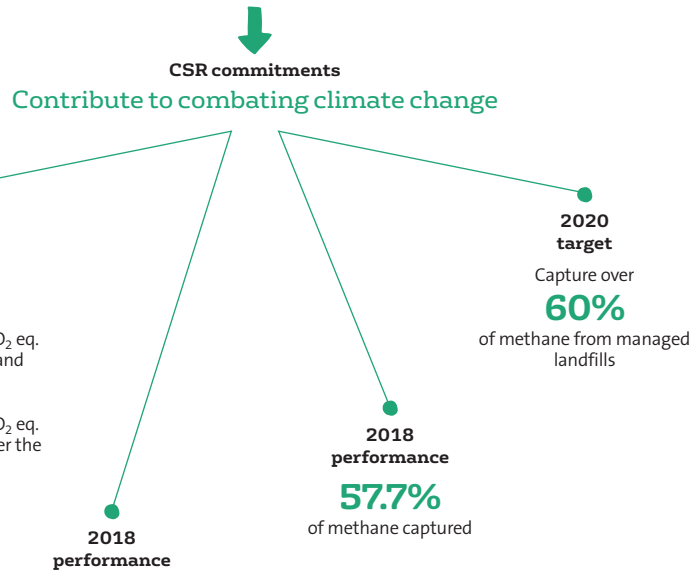
67.6%
of treated waste recovered as matter and energy

109,361
metric tons of materials recovered from dismantling operations

63%
of combustion residues recovered (incineration and energy business)

58%
of sewage sludge recovered

1,501 kt
of alternative fuels produced from treated waste



ENERGY PERFORMANCE

17.5 million MWh of renewable and alternative energy produced, equivalent to 31,3% of the Group's total energy production

87% Energy efficiency of heating networks delivering more than 100 GWh/year

761 kWh/t Energy production from municipal waste incinerators

6.7 million MWh of primary energy saved thanks to cogeneration (heat production and distribution installations producing over 100 GWh/year)

344 Wh/m³ Electricity used to treat wastewater in treatment plants with a greater than 100,000 population equivalent capacity

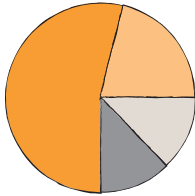


SOCIAL DATA

BREAKDOWN OF THE WORKFORCE

By socio-professional category

- 54% Manual workers/operatives
- 21% Line managers / Technical
- 13% Office workers
- 12% Executives



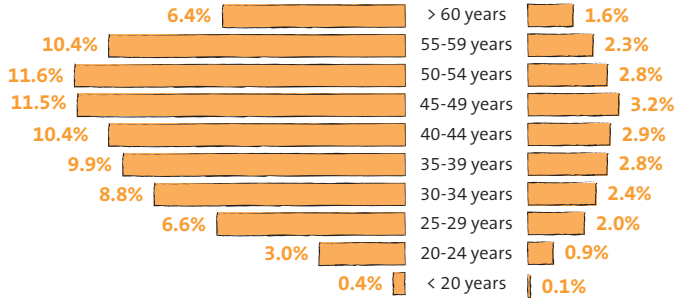
91%
of employees have a permanent contract

By gender and age

135,411
men (79%)

Age

36,084
women (21%)



44 years
Average age of the workforce

21%
of employees are over the age of 55

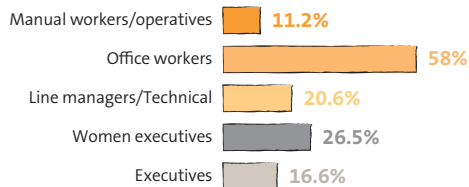
13%
of employees are under the age of 30

WOMEN IN THE GROUP WORKFORCE AND IMPROVEMENT

By socio-professional category

21%

women in 2018
(20.7% in 2017)



46%

of women on the Board of Directors

CSR commitment Guarantee a safe and healthy work environment

2020 target
Achieve an injury frequency rate of less than or equal to
6.5

2018 performance
Frequency rate of workplace injury in 2018:
8.47
(9.55 in 2017)

CHANGE IN WORKPLACE INJURY FREQUENCY AND SEVERITY RATES

0.47

Severity rate of workplace injury
(0.55 in 2017)

-10%

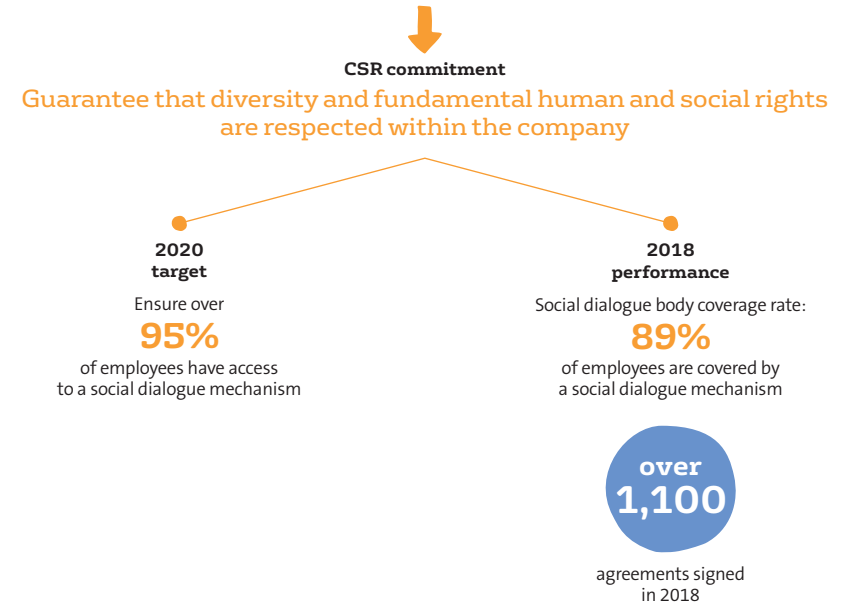
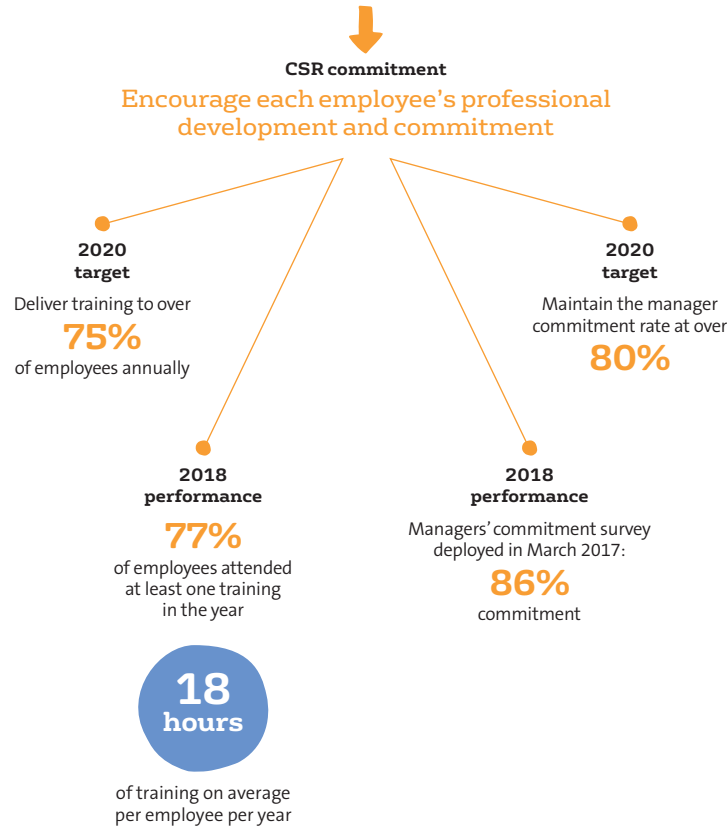
fewer lost time workplace injury (excluding commute) in comparison to 2017
(In 2017: 1.8% fewer lost time workplace injury (excluding commute) in comparison to 2016)

Frequency rate: number of lost time workplace injury per million hours worked.

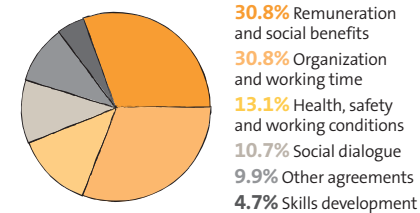
Almost 59%

of employees benefited from at least one health and safety training session
(In 2017: 56% of employees benefited from at least one health and safety training session)

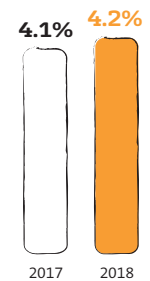
Severity rate: number of days lost as a result of workplace injury per thousand hours worked.



Breakdown of agreements signed by topic



Absenteeism rate (excluding maternity and paternity leave)



SOCIETAL DATA

↓
CSR commitment

Build new models for relations and value creation with our stakeholders

2020 target

Have established a **major partnership** based on creating shared value in every business zone and growth segment

2018 performance

11/11 business zones and **6/7** growth segments covered

↓
CSR commitment

Contribute to local development

2020 target

Maintain expenditure reinvested in the regions above

80%

2018 performance

Spending reinvested in the regions:

85.7%

(average calculated over the main geographic zones representing 73.5% of revenue in 2018)

48%

of strategic suppliers assessed for their CSR performance since 2015

63%

of Veolia's active contract portfolio includes a sustainable development clause

€9.6

million is spent on purchases in the sheltered and supported employment sector in France

165,000

supported jobs in 2017 in France (direct, indirect and induced jobs)

↓
CSR commitment

Supply and maintain services crucial to health and human development

2020 target

Contribute to the United Nations Sustainable Development Goals in the same way as we contributed to the Millennium Development Goals

51

new projects supported by the Veolia Foundation in 2018 spending **€2.6 million**

2018 performance

9.6 million people given access to drinking water and **4.4** million to sanitation in countries with an access deficit

99.7%

of the water distributed by Veolia complied with applicable regulations

Veolia Communications Department – April 2019

Illustrations: Rude.

Creation and production:  **havas paris**

Printing: STIPA.



Out of respect for the environment, this document has been produced by an Imprim'Vert® printer on Symbol Matt Plus paper, this product is made from materials from well-managed FSC® certified forests and other controlled sources.

Resourcing the world

Veolia

30, rue Madeleine Vionnet - 93300 Aubervilliers - France

Tel.: +33 (0)1 85 57 70 00

www.veolia.com